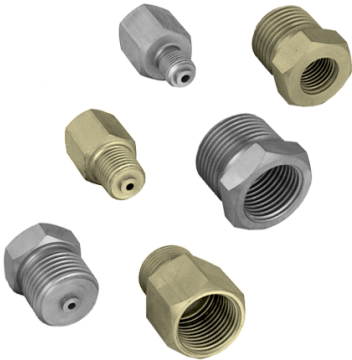


Metal accessories to adapt the manometer thread to the installation



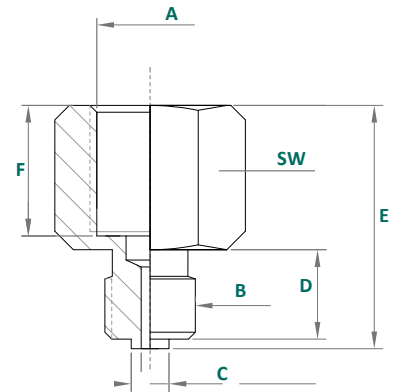
STANDARD PARAMETERS

Process connection: **Standard BSP, metric or NPT**

Pressure gauge connection: **Standard BSP, metric or NPT**

MATERIALS

Brass / Stainless steel AISI 316



Female	Male	DIMENSIONS (mm)					Max PN			
		A	B	SW	C	D	E	F	AISI 316	Brass
1/8" BSP	1/4" NPT	17			Ø5.5	14	23.4	12	430	250
1/8" BSPT	1/4" NPT	17			Ø5.5	14	23.4	12	430	250
	1/8" BSP	17			Ø5.5	11	27.4	12	460	220
1/4" BSP	M12x1	22			Ø5.5	12	28.4	12	340	170
	M12x1.5	17			Ø5.5	12	28.4	12	340	170
	M14x1.5	17			Ø5.5	9	24.4	12	340	170
	M20x1.5	22			Ø5.5	14	36.4	19	410	240
	1/8" BSP	22			Ø5.5	11	30.4	12	340	170
	1/4" BSPT	17			Ø5.5	12	31.4	12	340	170
	3/8" BSP	22			Ø5.5	16	26.4	12	410	240
	1/2" BSP	22			Ø5.5	16	26.4	12	410	240
	3/4" BSP	27			Ø5.5	18	27.4	12	420	250
	1/8" NPT	17			Ø5.5	10	27.4	12	330	150
	1/4" NPT	17			Ø5.5	14	29.4	12	340	170
	1/2" NPT	24			Ø5.5	19	28.4	12	410	240
	1/4" SAE	17			Ø5.5	15	34.6	12	340	170
	3/8" BSP	M20x1.5	22			Ø5.5	14	32.4	15	410
1/8" BSP		22			Ø5.5	13	31.4	15	260	120
1/2" BSP		22			Ø5.5	16	26.4	15	410	240
1/4" BSPT		22			Ø5.5	14	32.4	15	260	120
3/8" NPT		22			Ø5.5	16	34.4	15	260	120
3/4" BSP		27			Ø5.5	18	27.4	15	420	250
1/2" BSP	M12x1.5	24			Ø5.5	13	35.4	19	340	170
	M20x1.5	24			Ø5.5	14	36.4	19	250	120
	1/8" BSP	24			Ø5.5	13	35.4	19	250	120
	3/8" BSP	24			Ø5.5	13	35.4	19	250	120
	1/2" BSP	24			Ø5.5	16	38.4	19	250	120
	3/4" BSP	27			Ø5.5	18	27.4	19	420	250
	1/2" NPT	24			Ø5.5	19	41.4	19	250	120
	3/4" NPT	27			Ø5.5	21	30.4	19	250	120
M20x1.5	1/2" BSP	24			Ø5.5	16	38.4	19	250	120